

Philipps



Universität  
Marburg

AG Astronomie



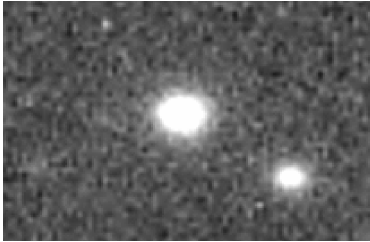
# A Study of Photometric Error on Two Different Photographic Plate Scans

Milan Spasovic

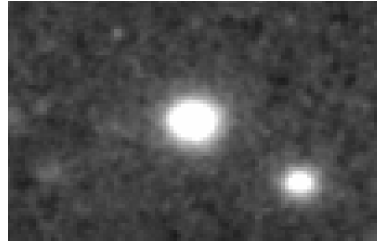
Philipps-Universität Marburg, Physics Department, History of Astronomy and Observational Astronomy

19. September 2017

61 high resolution photographic blue sensitive plates of the Gamma Cyg field from the Bruce astrograph at Landessternwarte Heidelberg-Königstuhl have been digitized both in Heidelberg and Sonneberg.



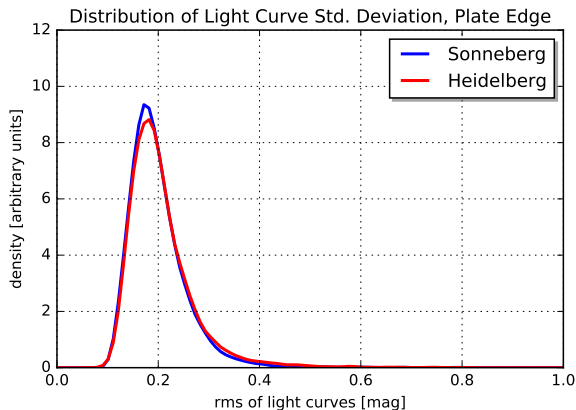
Heidelberg Scan



Sonneberg Scan

- ▶ Heidelberg scanner, 16 bit dynamic range, 2540 dpi resolution, resulting scale of 1.03 arcsec/pixel
- ▶ Sonneberg scanner, 16 bit dynamic range, 1200 dpi resolution, resulting scale of 2.15 arcsec/pixel

# Photometric Errors



**Thank you for your attention!**