

# Artifact Detection on Photographic Plates with Convolutional Neural Networks

**Gal Matijević // Harry Enke // Taavi Tuvikene**

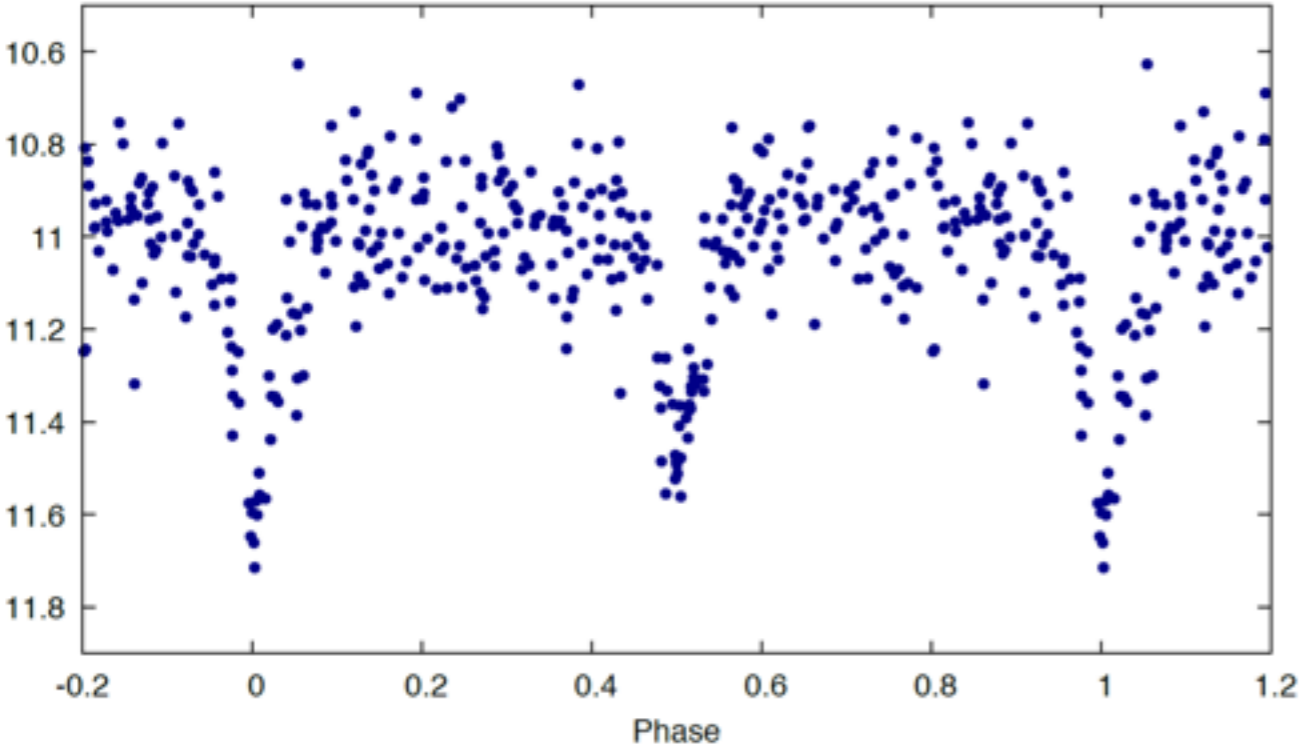
Leibniz Institute for Astrophysics Potsdam, Tartu Observatory

1871/1872/18 v Nord

Abban La 3824

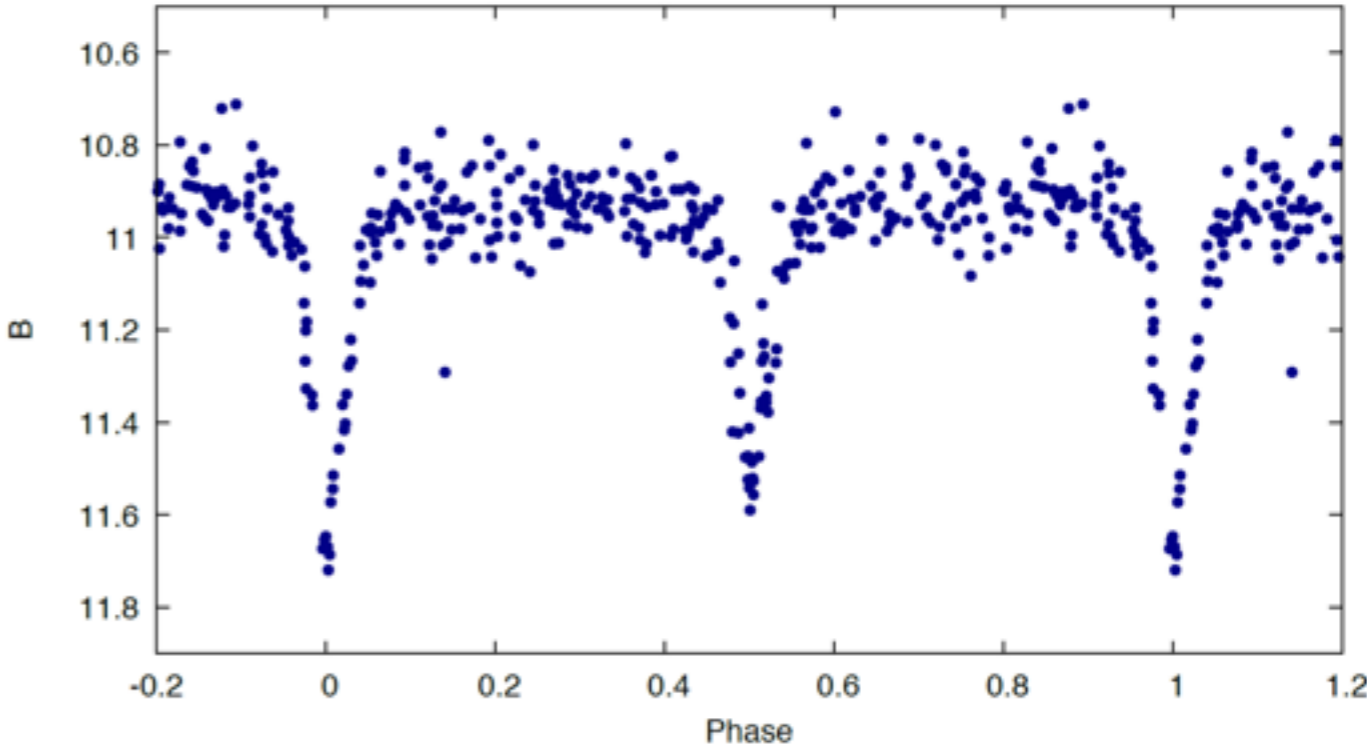
# Results: V466 Cyg light curve

APPLAUSE DR2 (PyPlate 2.0)



Calibration in annular bins

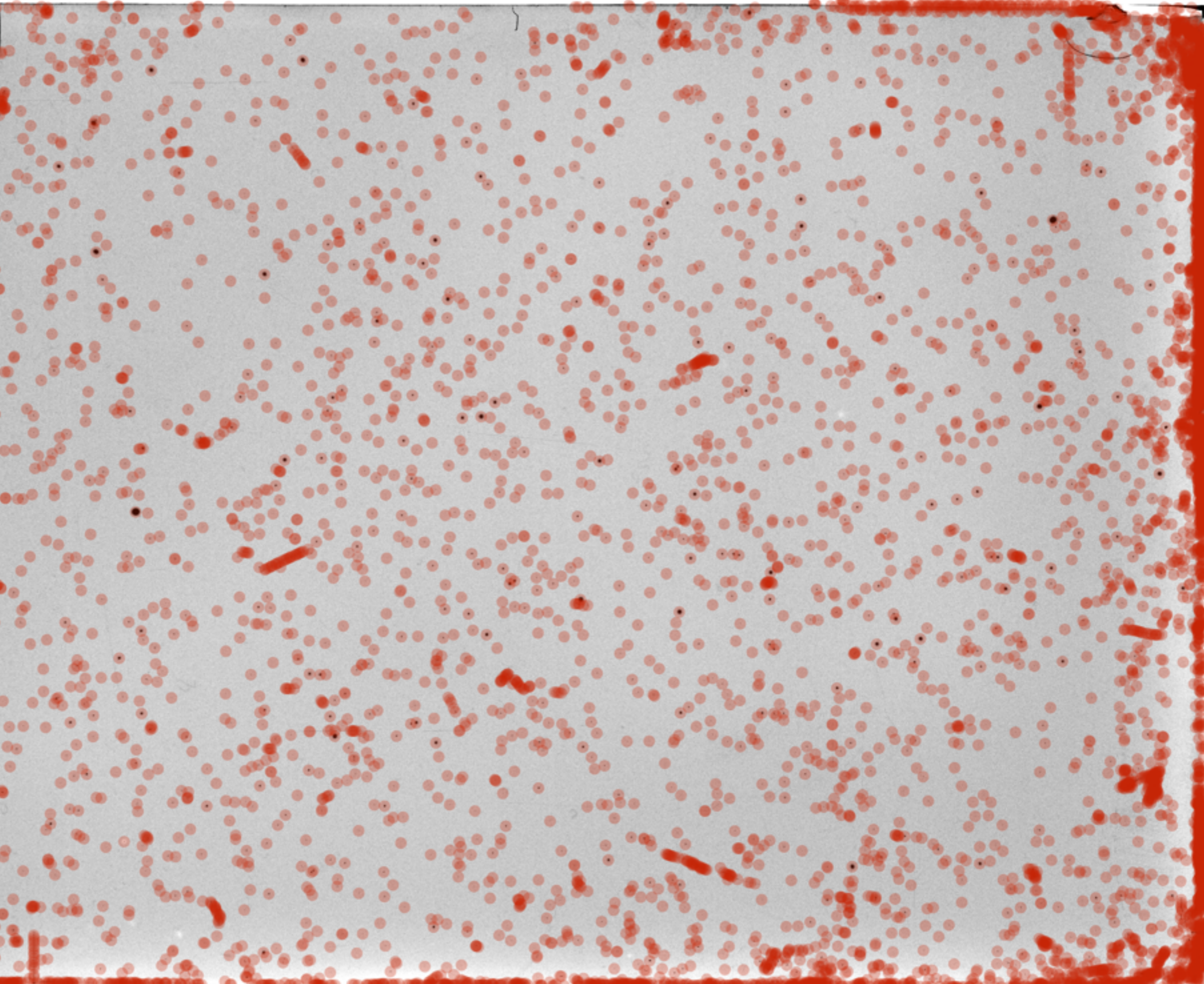
APPLAUSE DR3 (PyPlate 3.0)

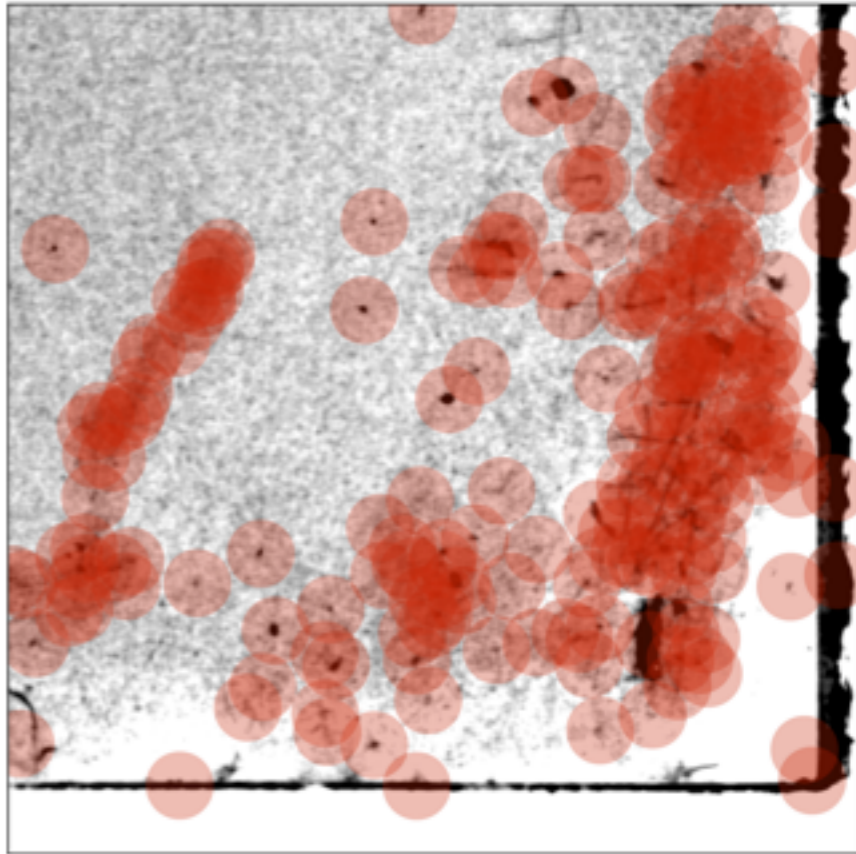
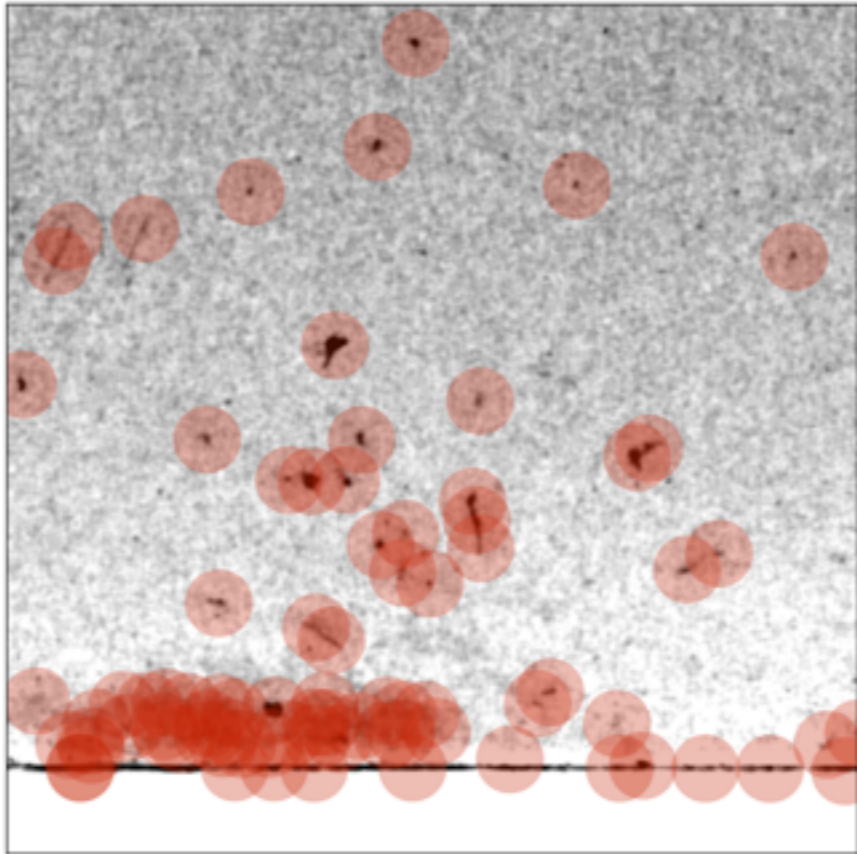
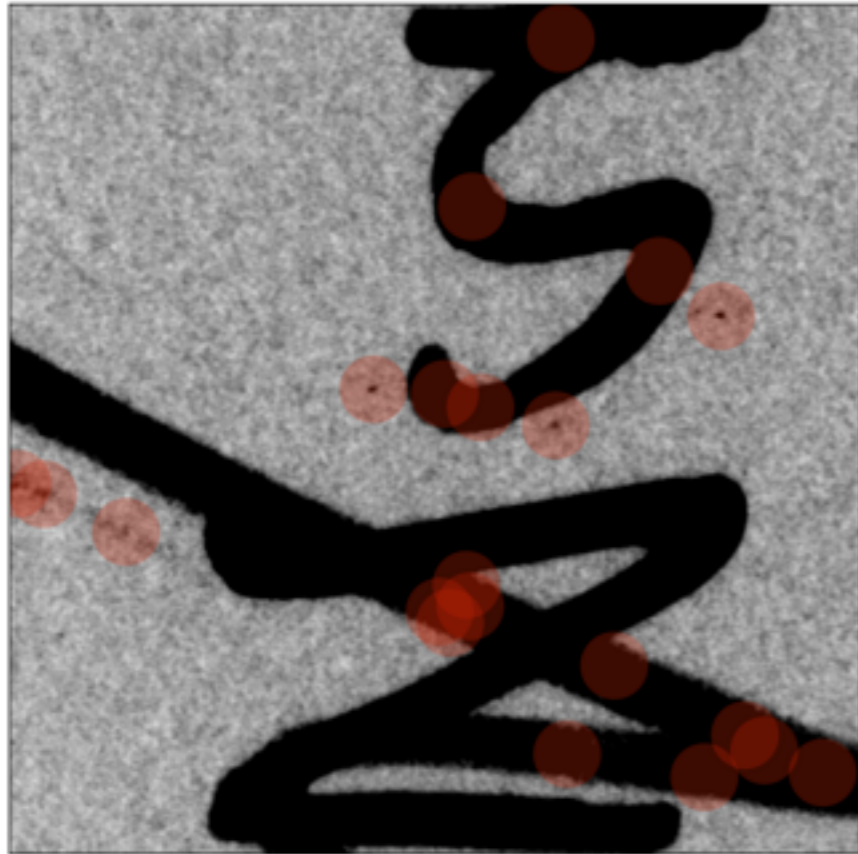
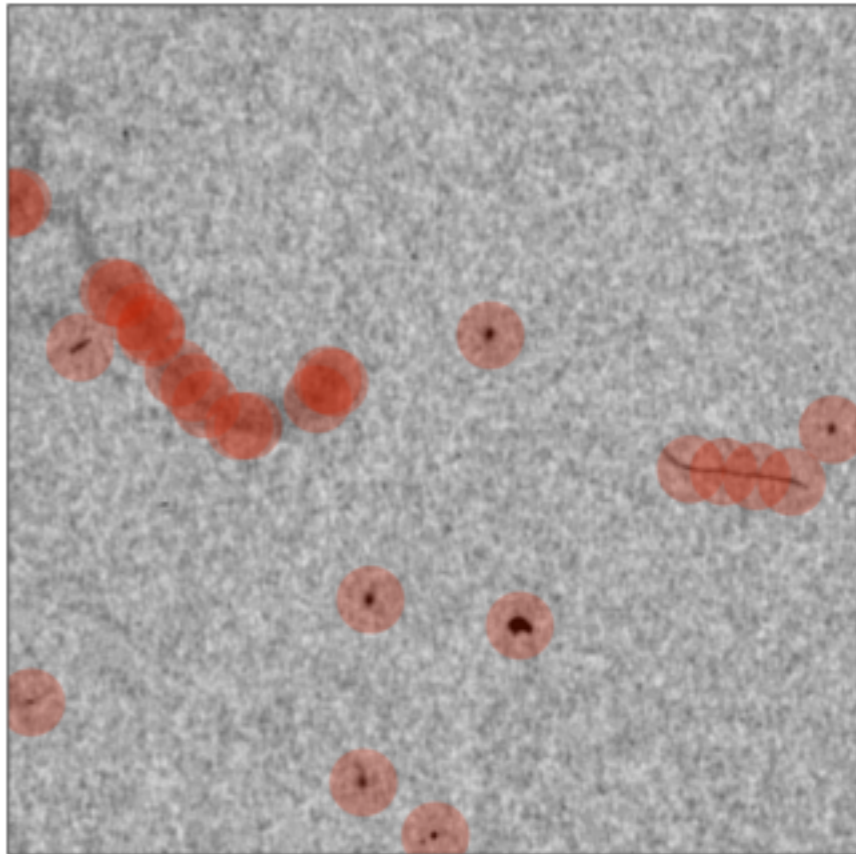
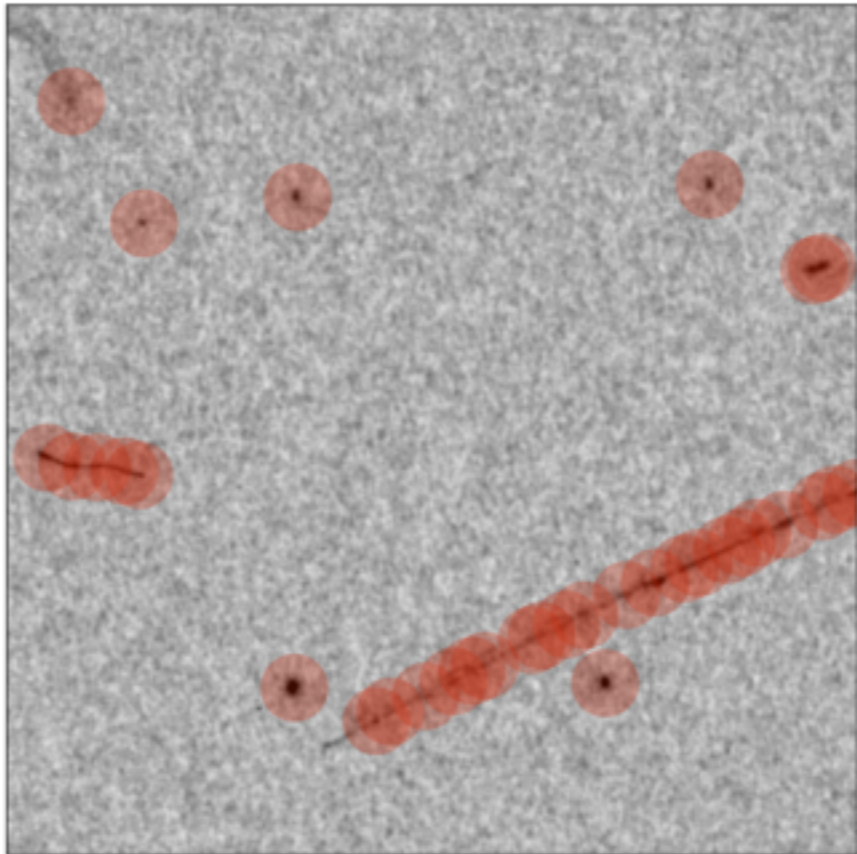
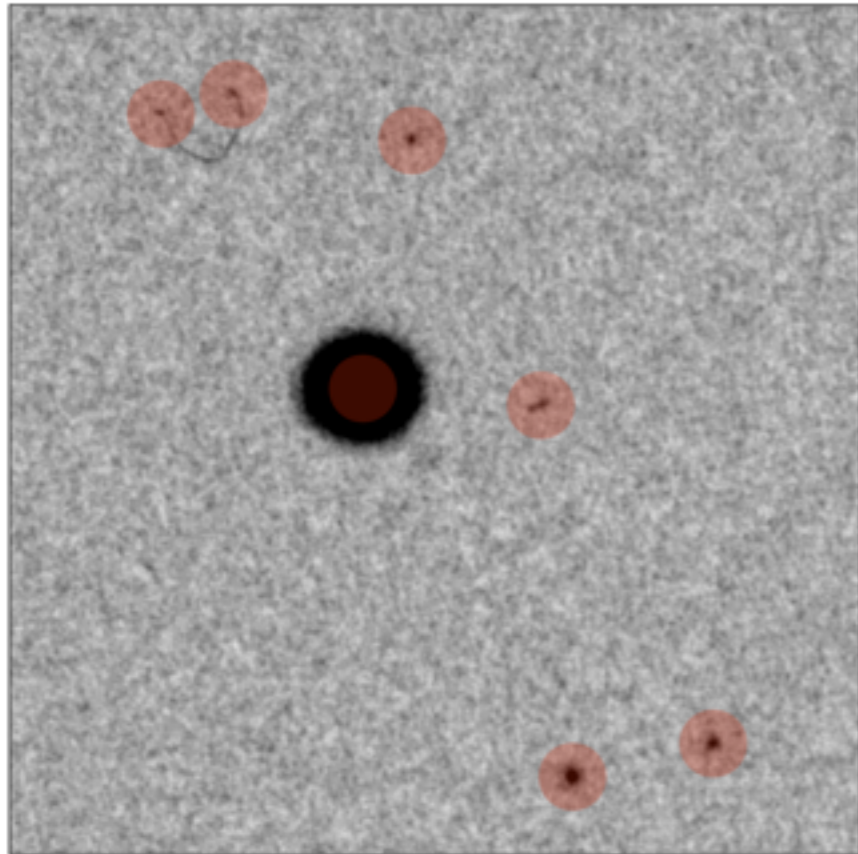


Calibration in sub-fields

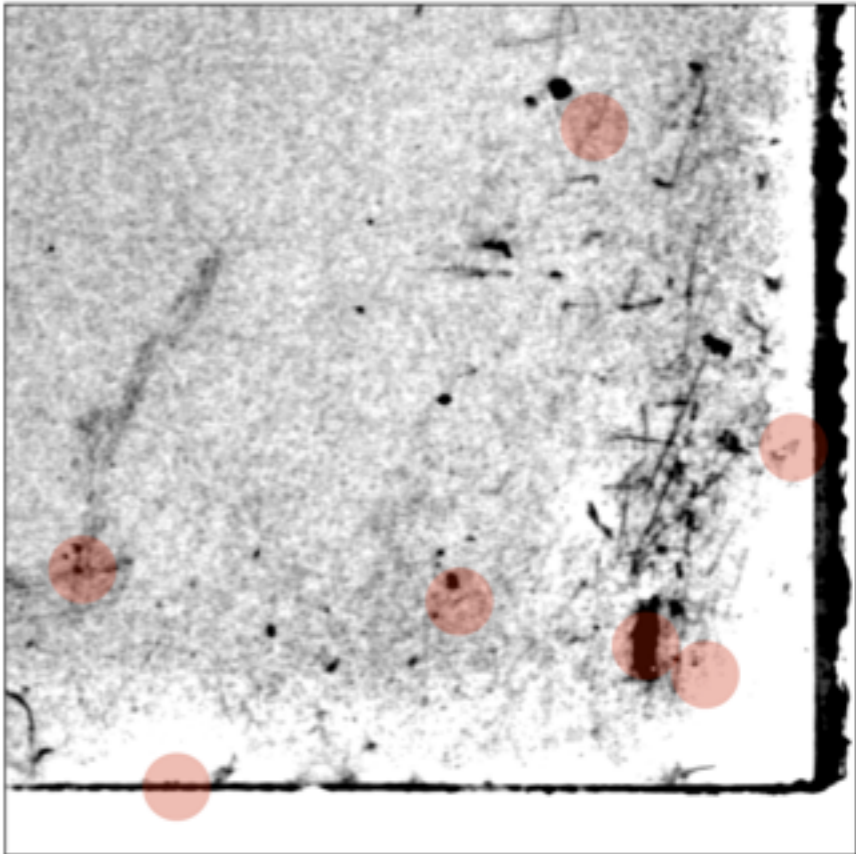
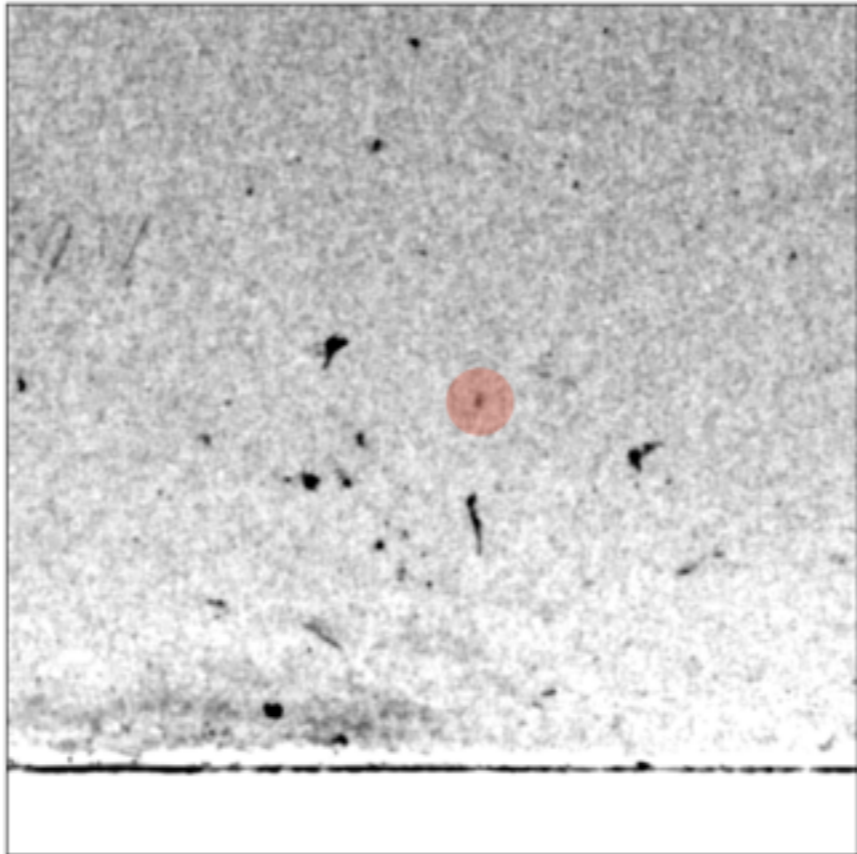
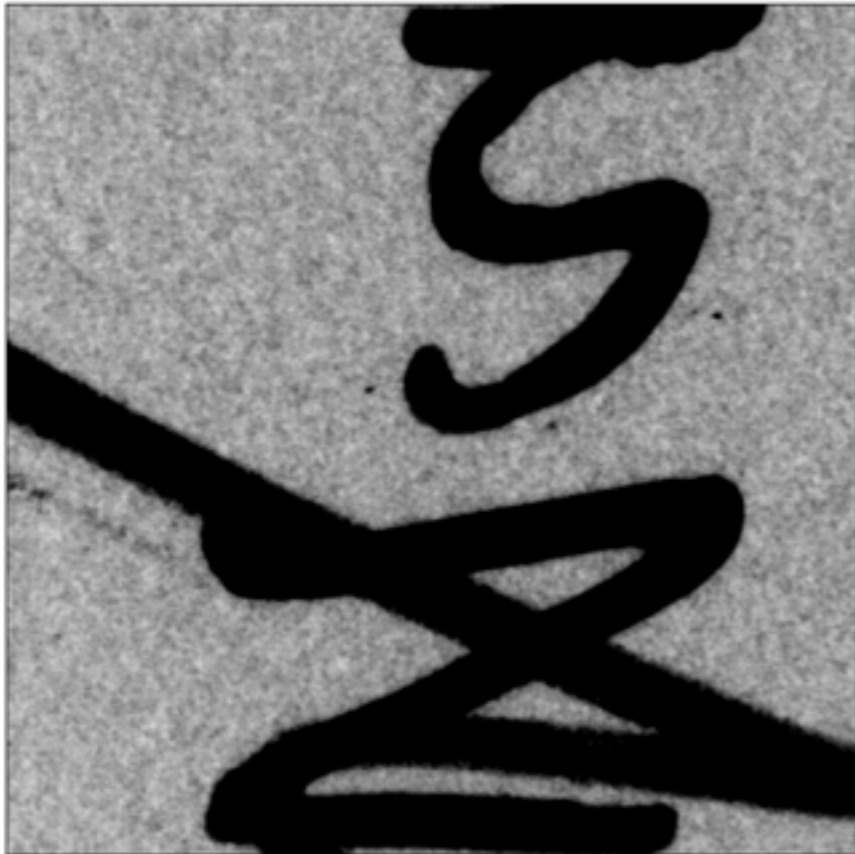
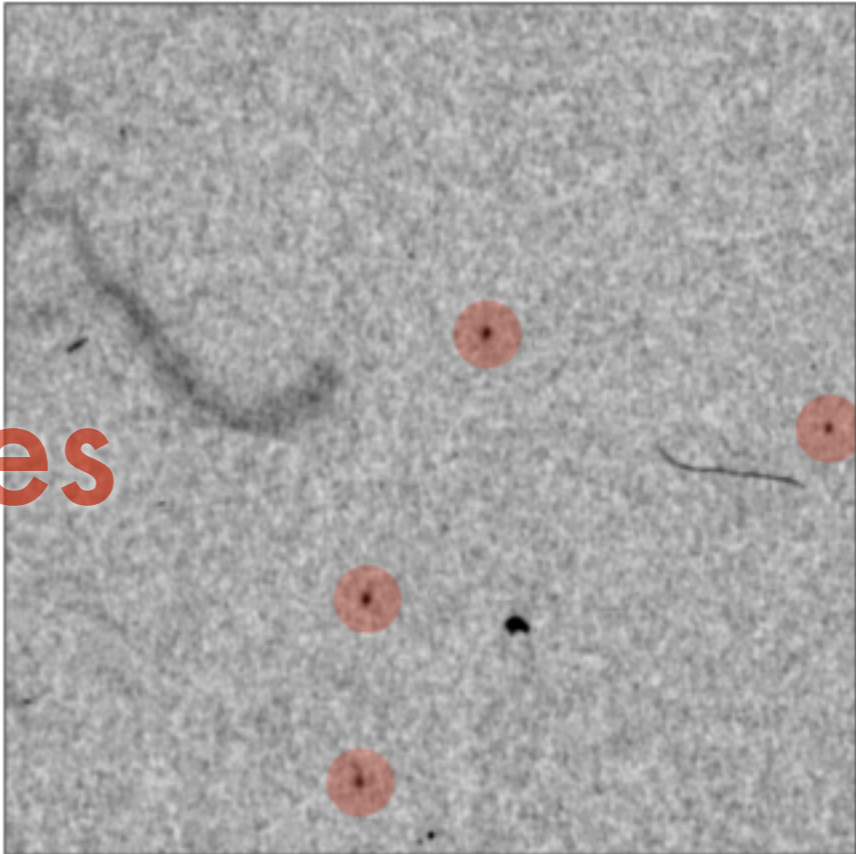
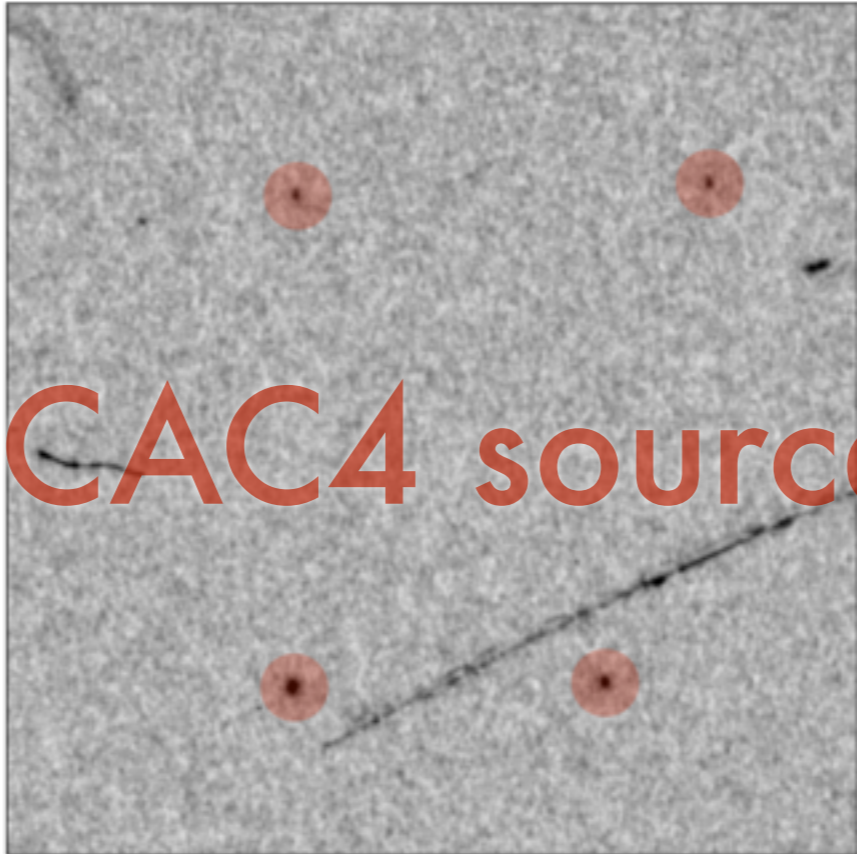
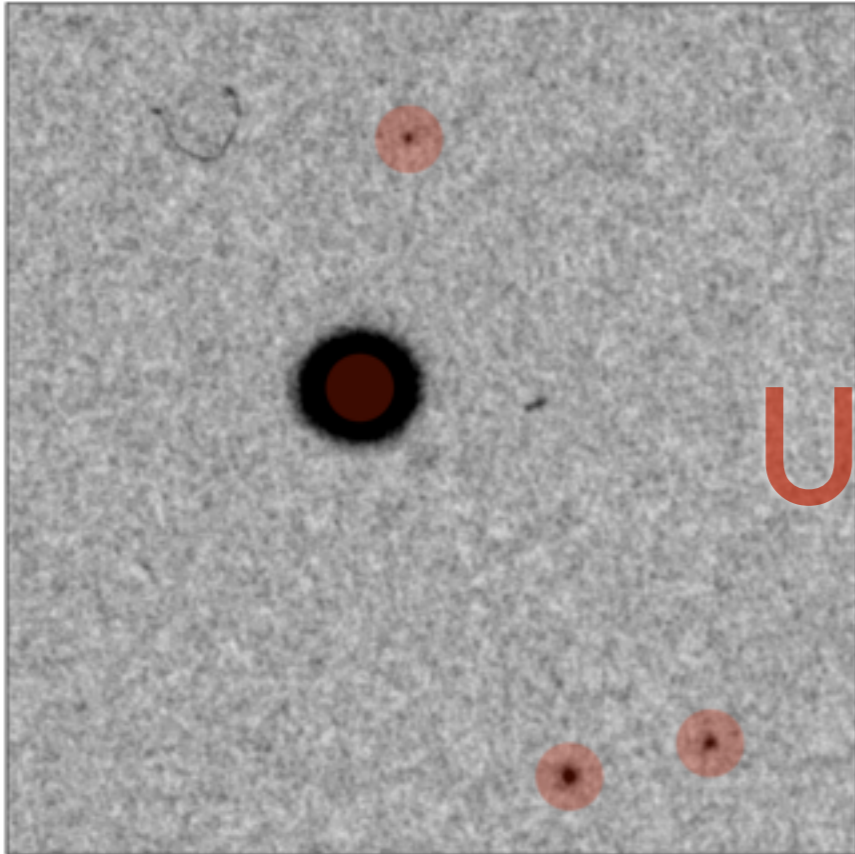
1021908718 K Nord

AbCam La384





UCAC4 sources

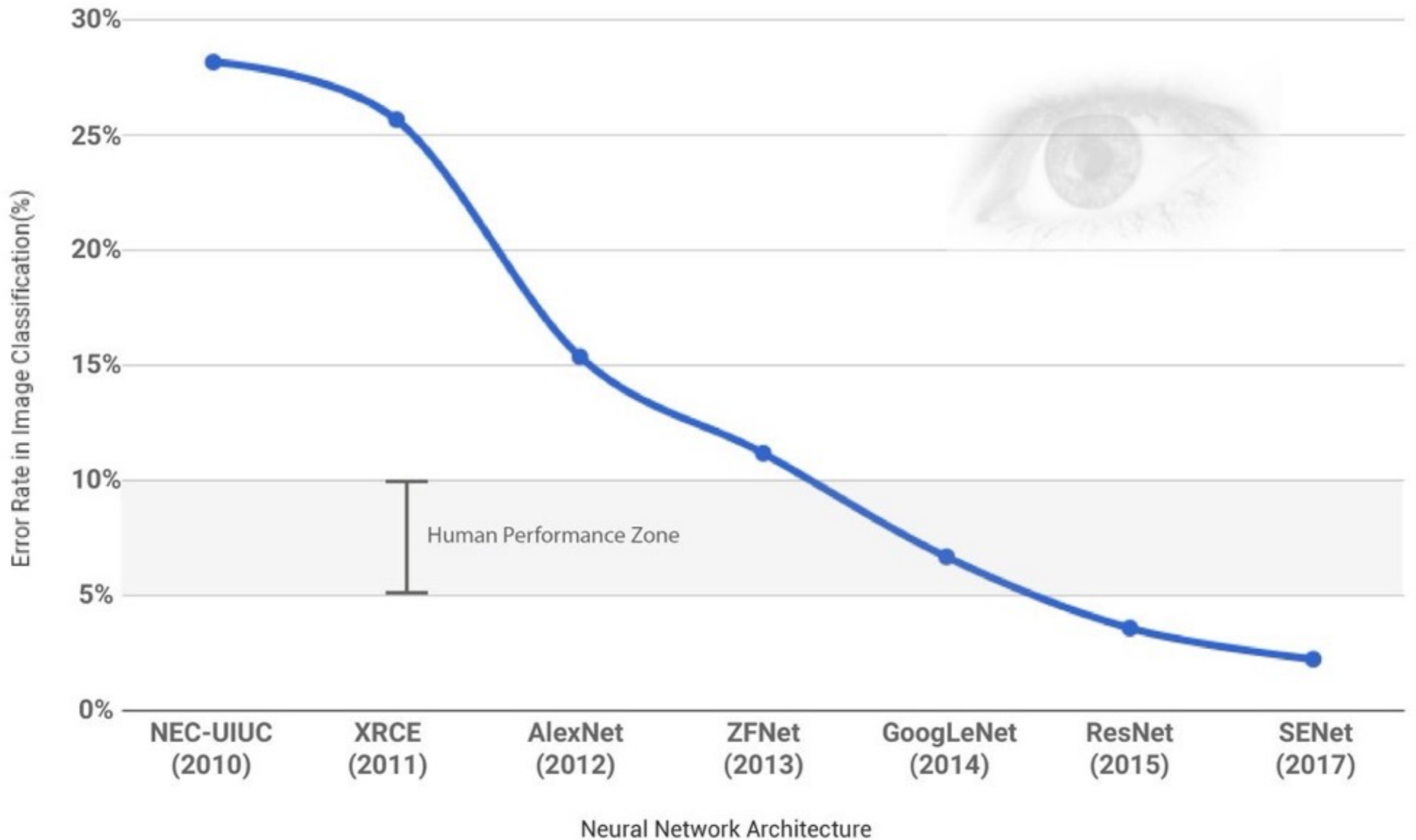


APPLAUSE DR3 has

3,508,339,749

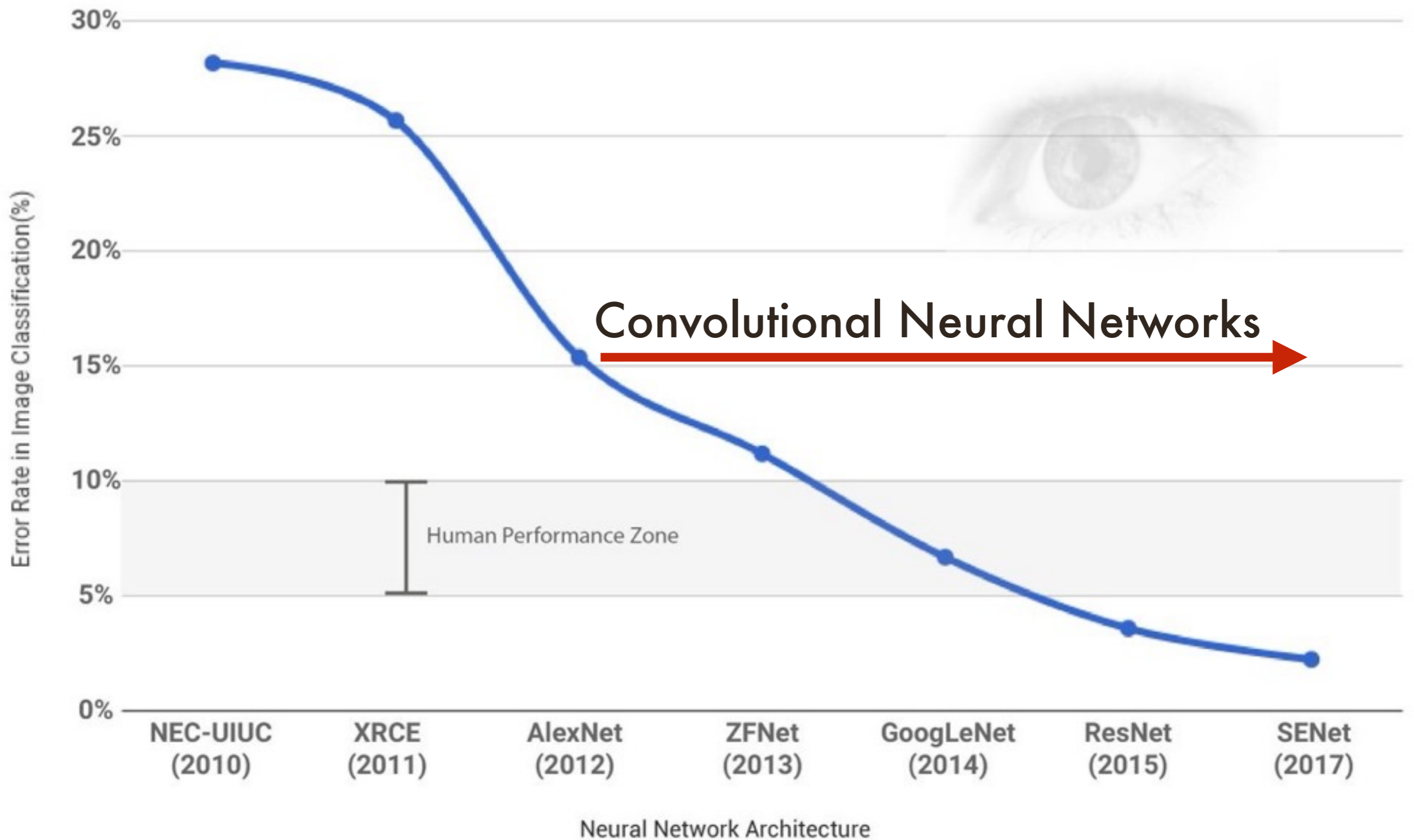
sources

# IMAGENET Large Scale Visual Recognition Challenge

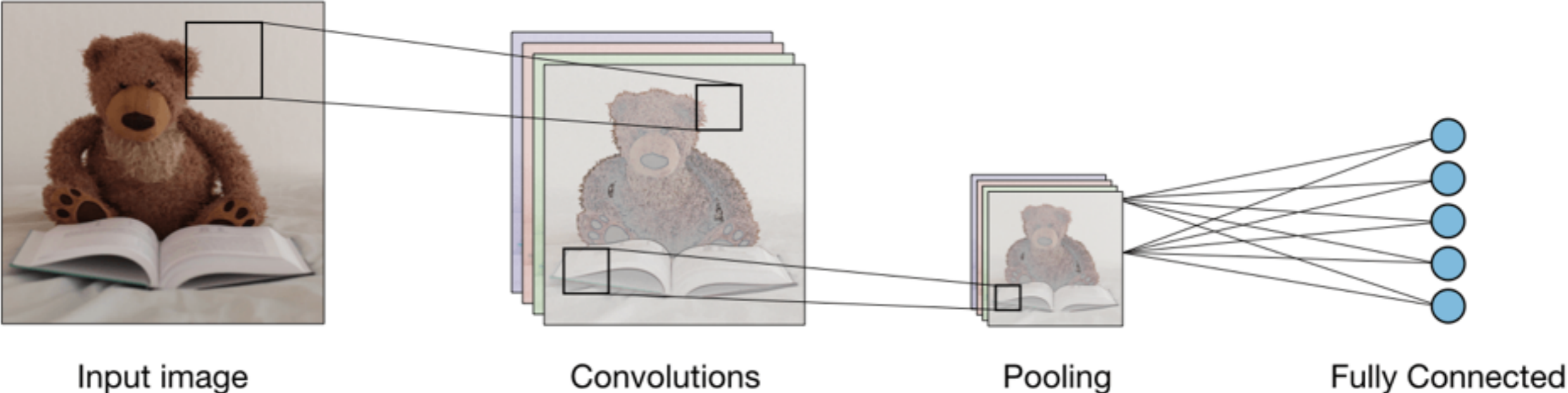




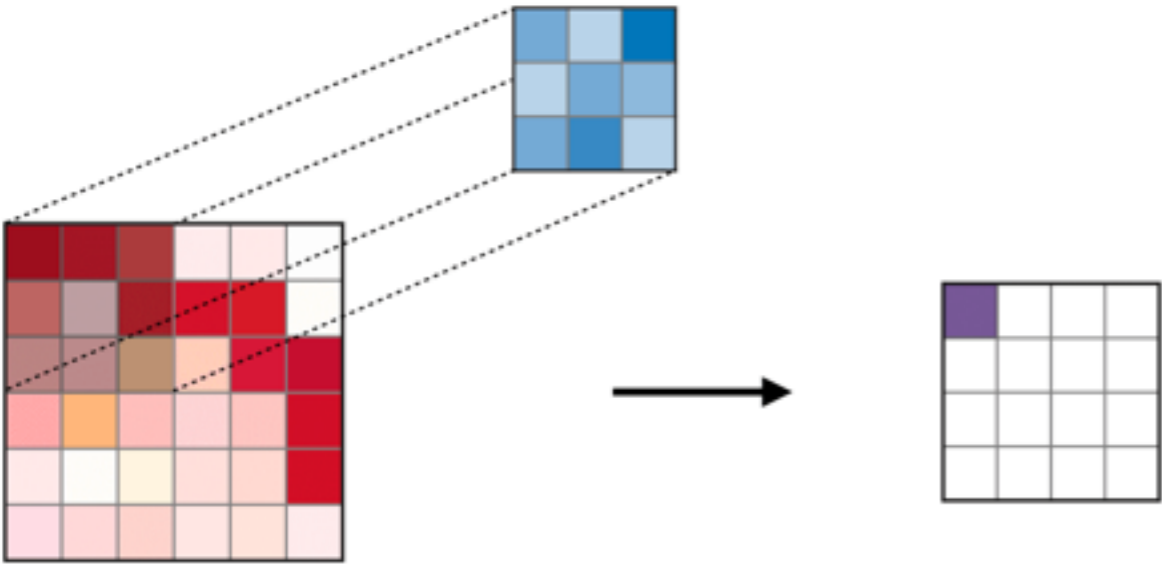
# IMAGENET Large Scale Visual Recognition Challenge



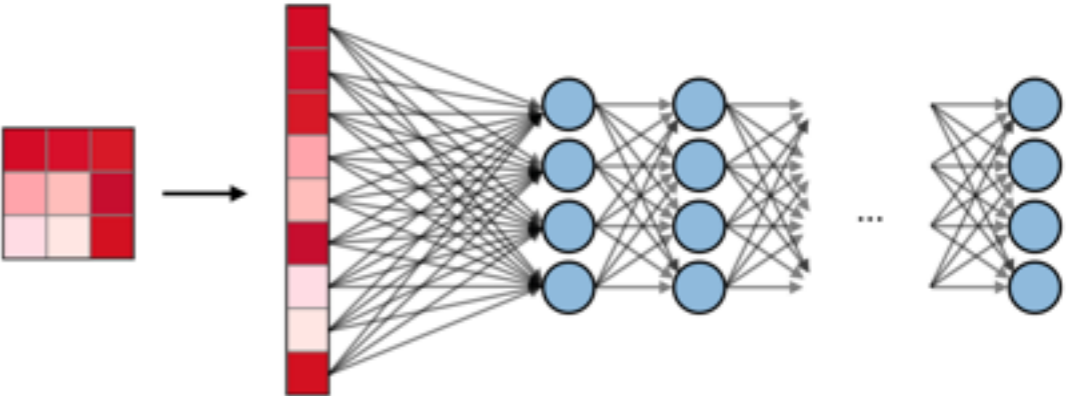
# Convolutional neural network (CNN) architecture



## Convolutional layer



## Fully-connected layers



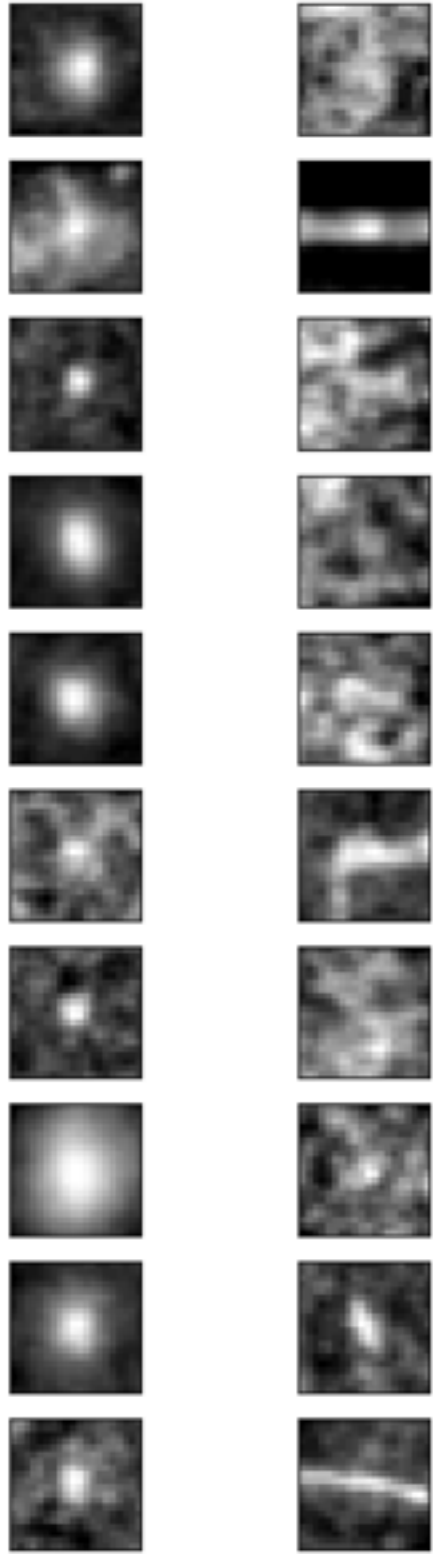
source: Shervine Amidi, stanford.edu

# Training set

(normalized and augmented)

Good=1 Bad=0

20x20 pixel thumbnails

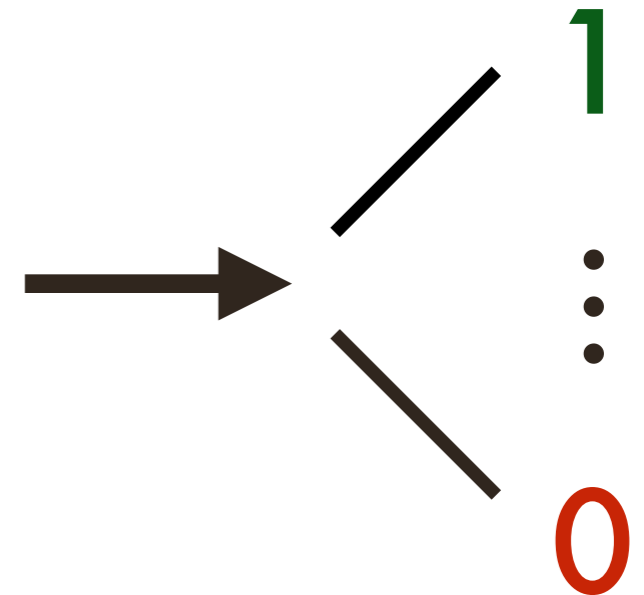
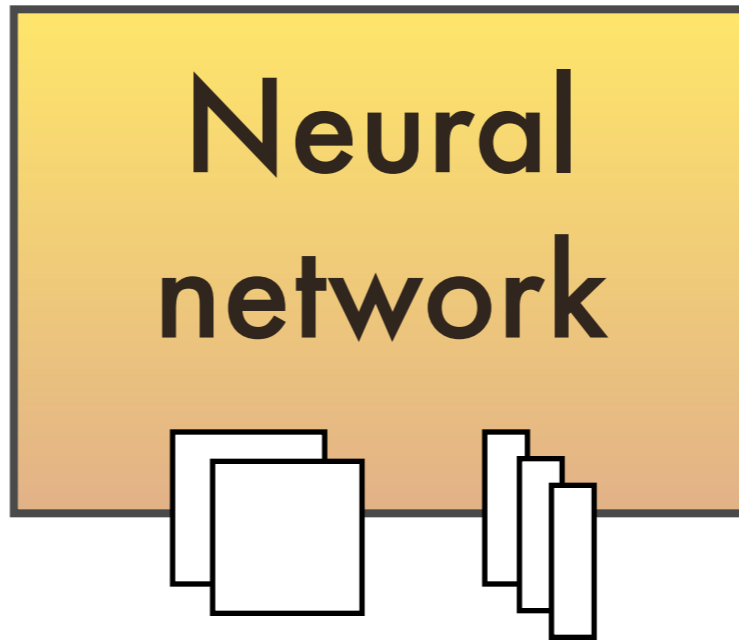


...

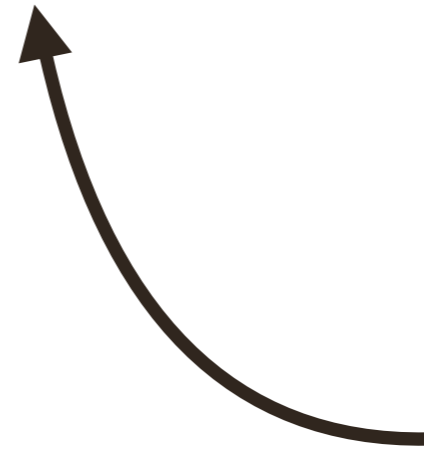
...

# Training process

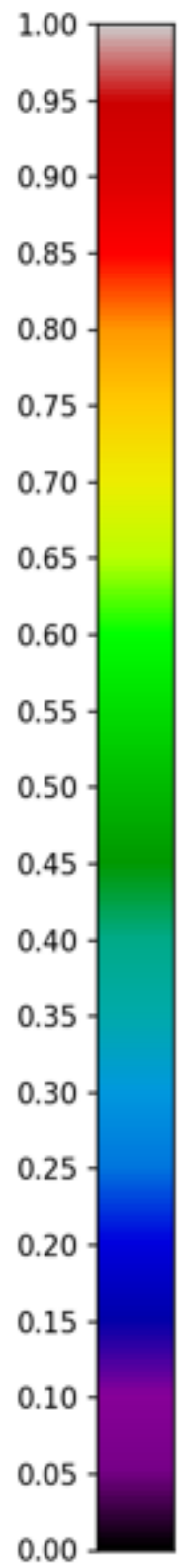
2 convolutional layers  
3 fully-connected layers



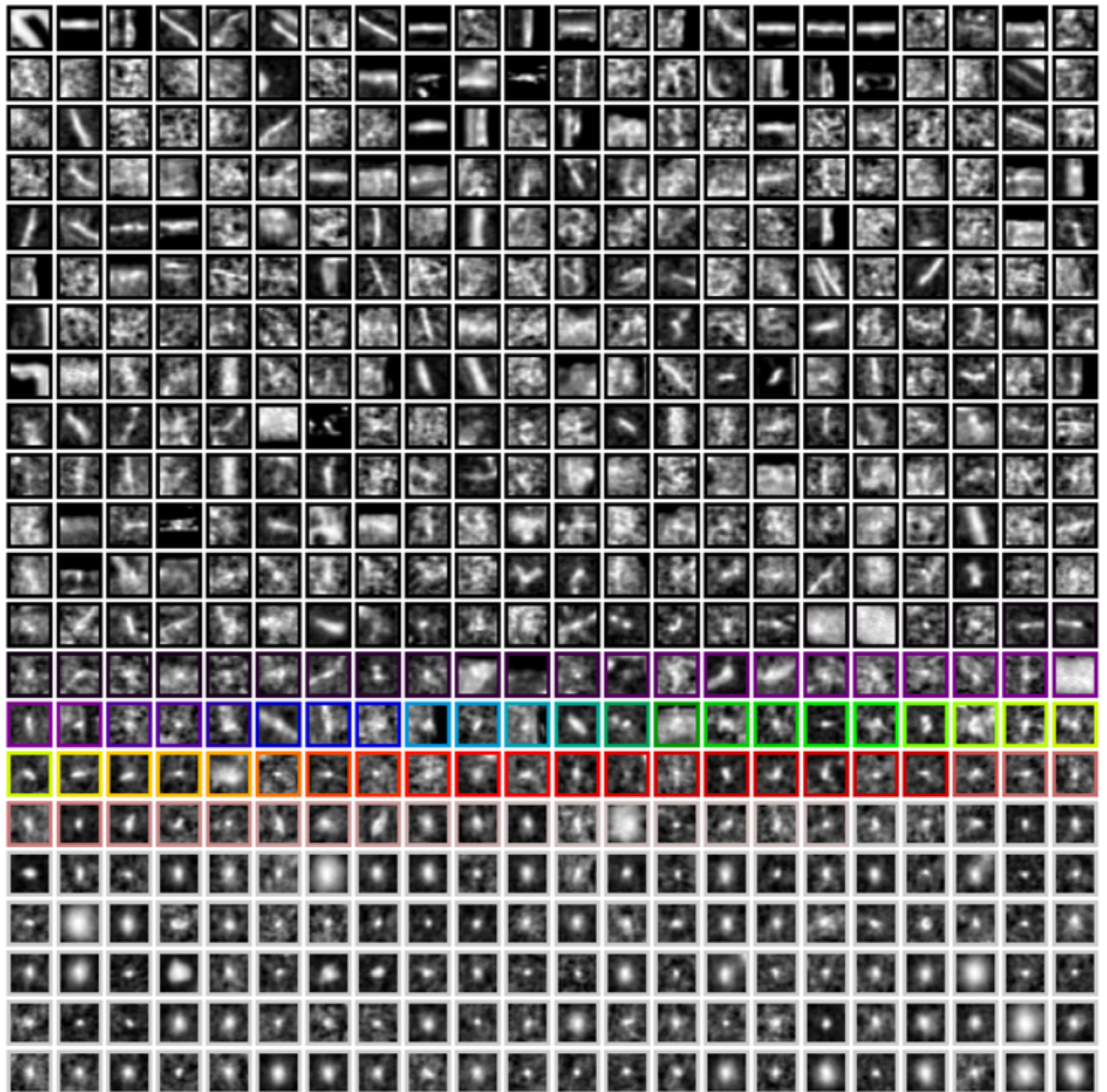
Cost function

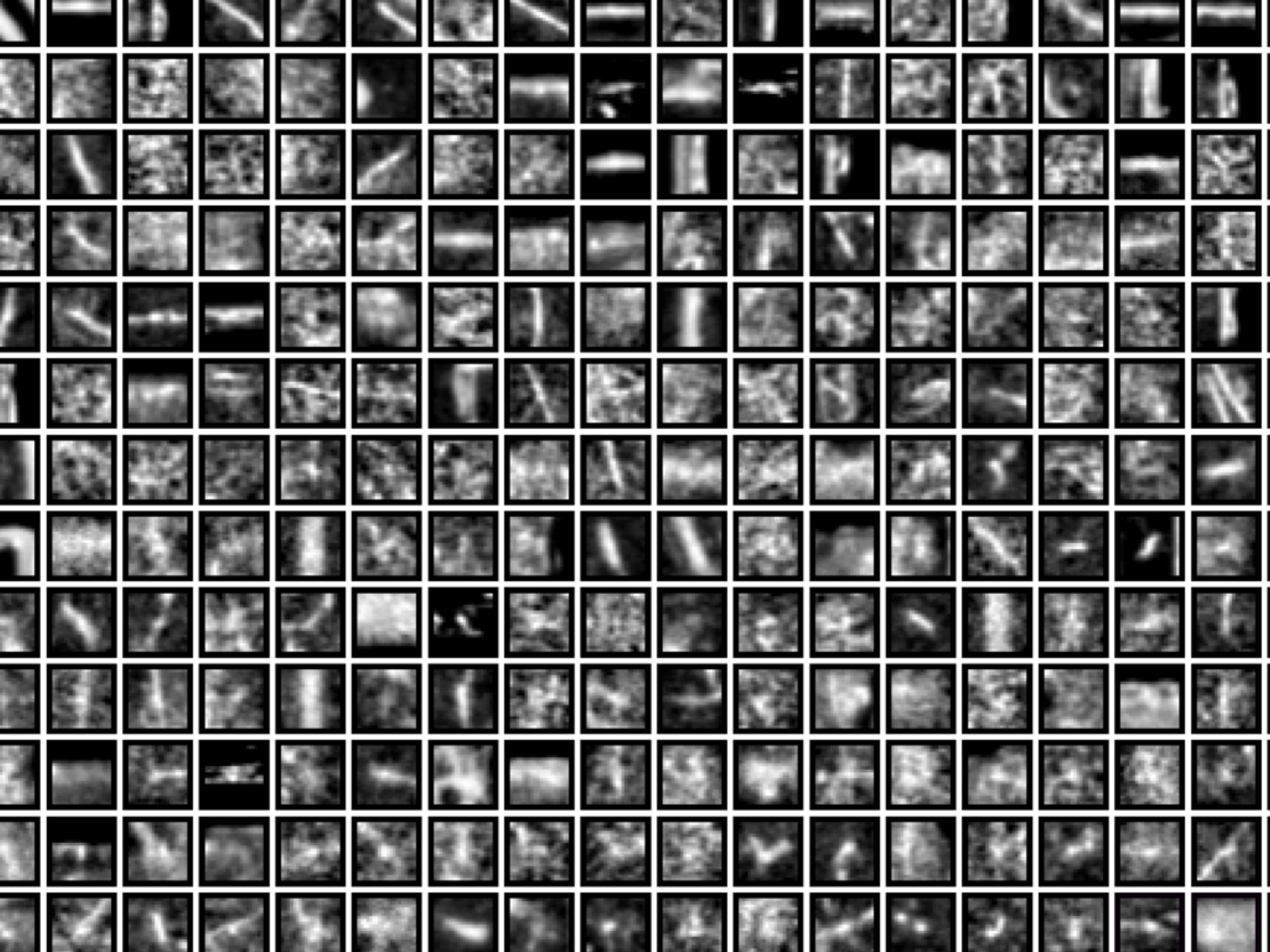


Good=1

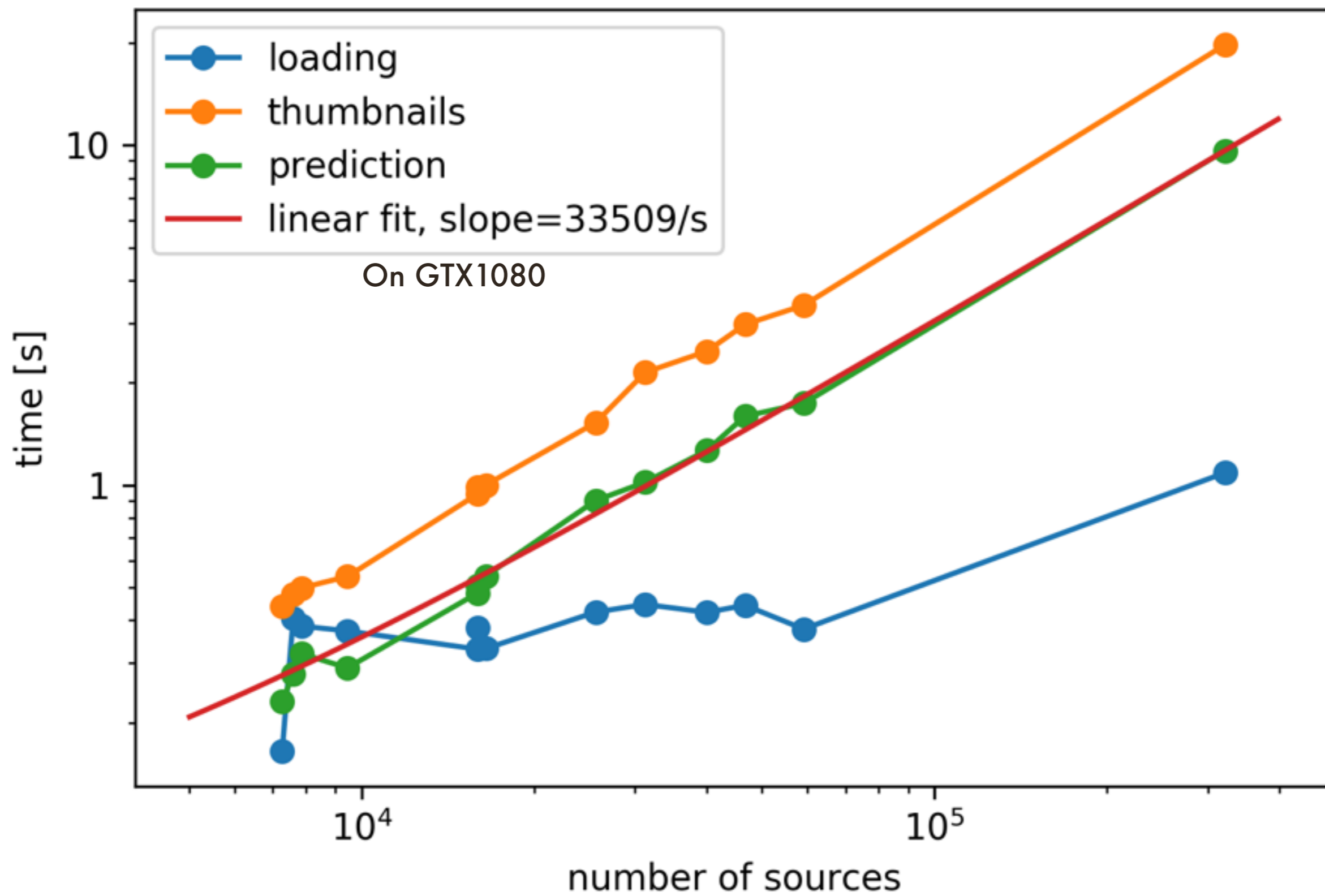


Bad=0

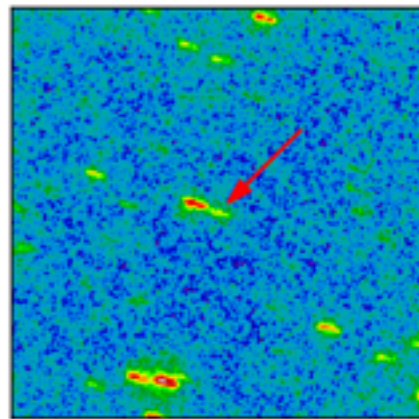
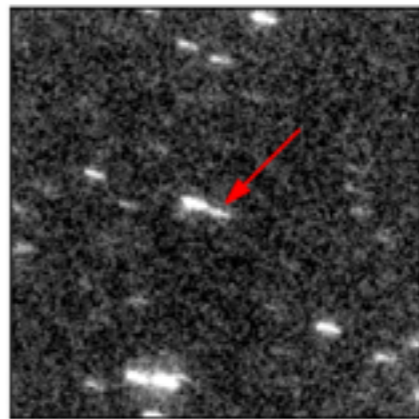
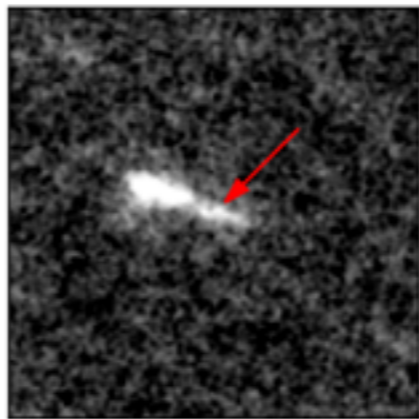
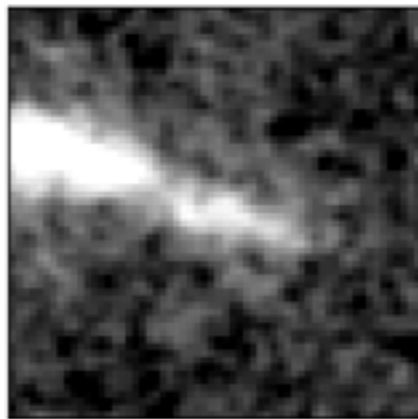
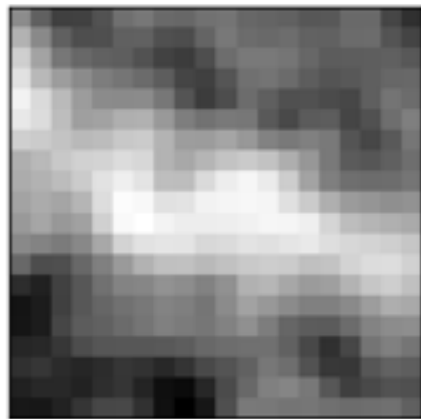




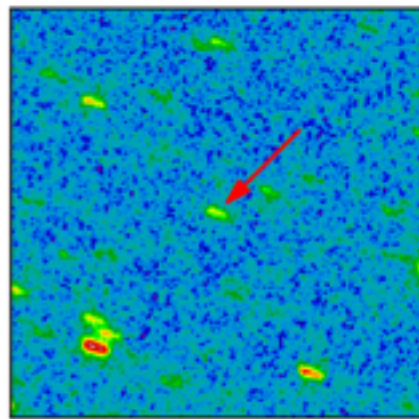
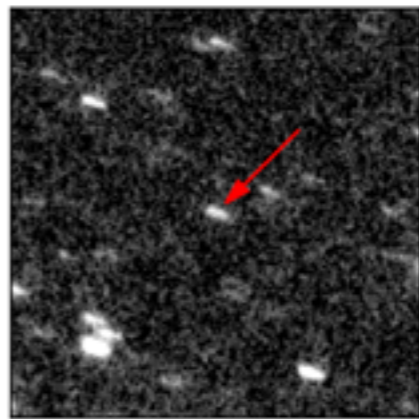
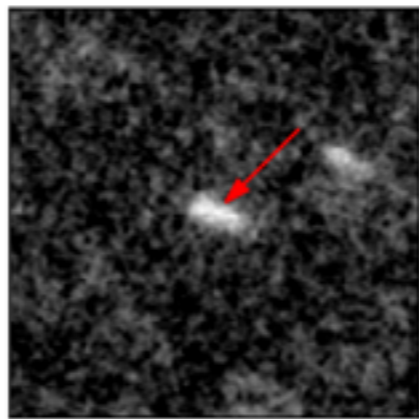
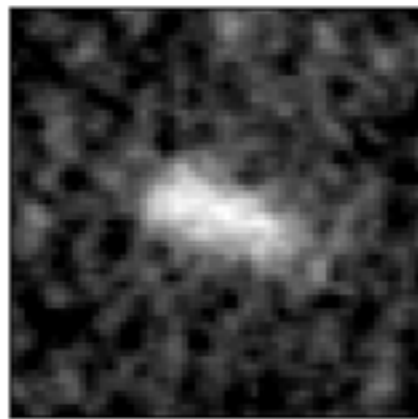
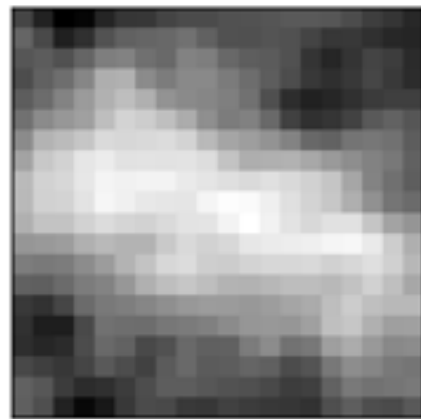




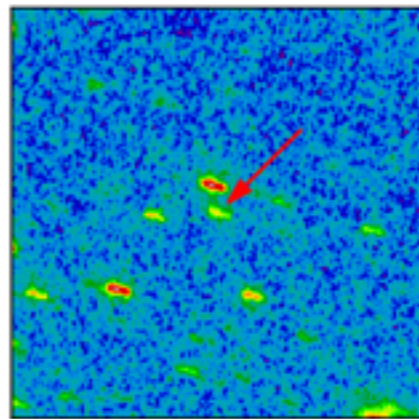
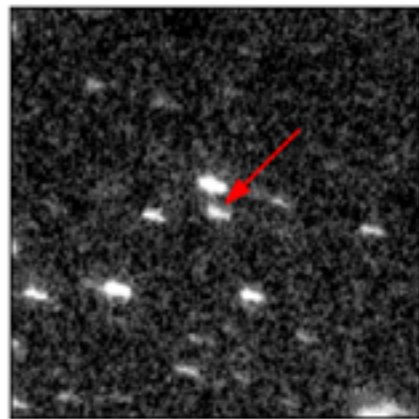
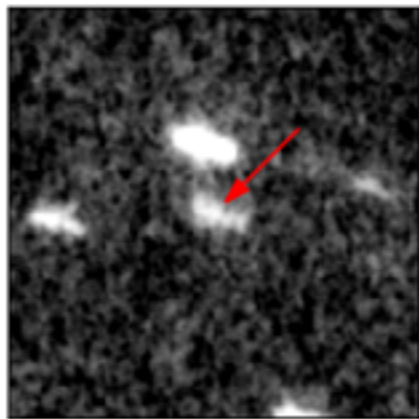
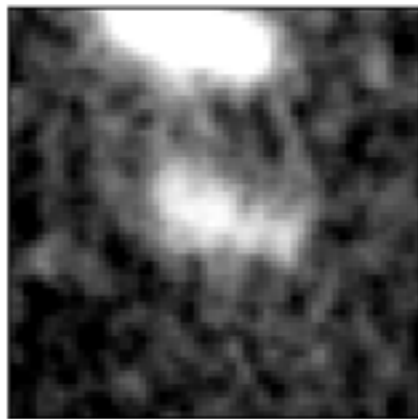
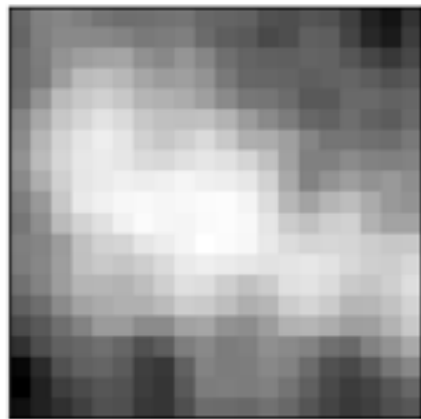
$p=0.001$



$p=0.51$



$p=0.999$





## Training set

- include sources from many plates to learn about different PSFs
- **positives** identified as isolated UCAC4 sources
- **negatives** have no UCAC4 counterparts and have many other sources inside of a small (several arcsec) circle
- limit sources to the inner part of the plate

# Train more CNNs

