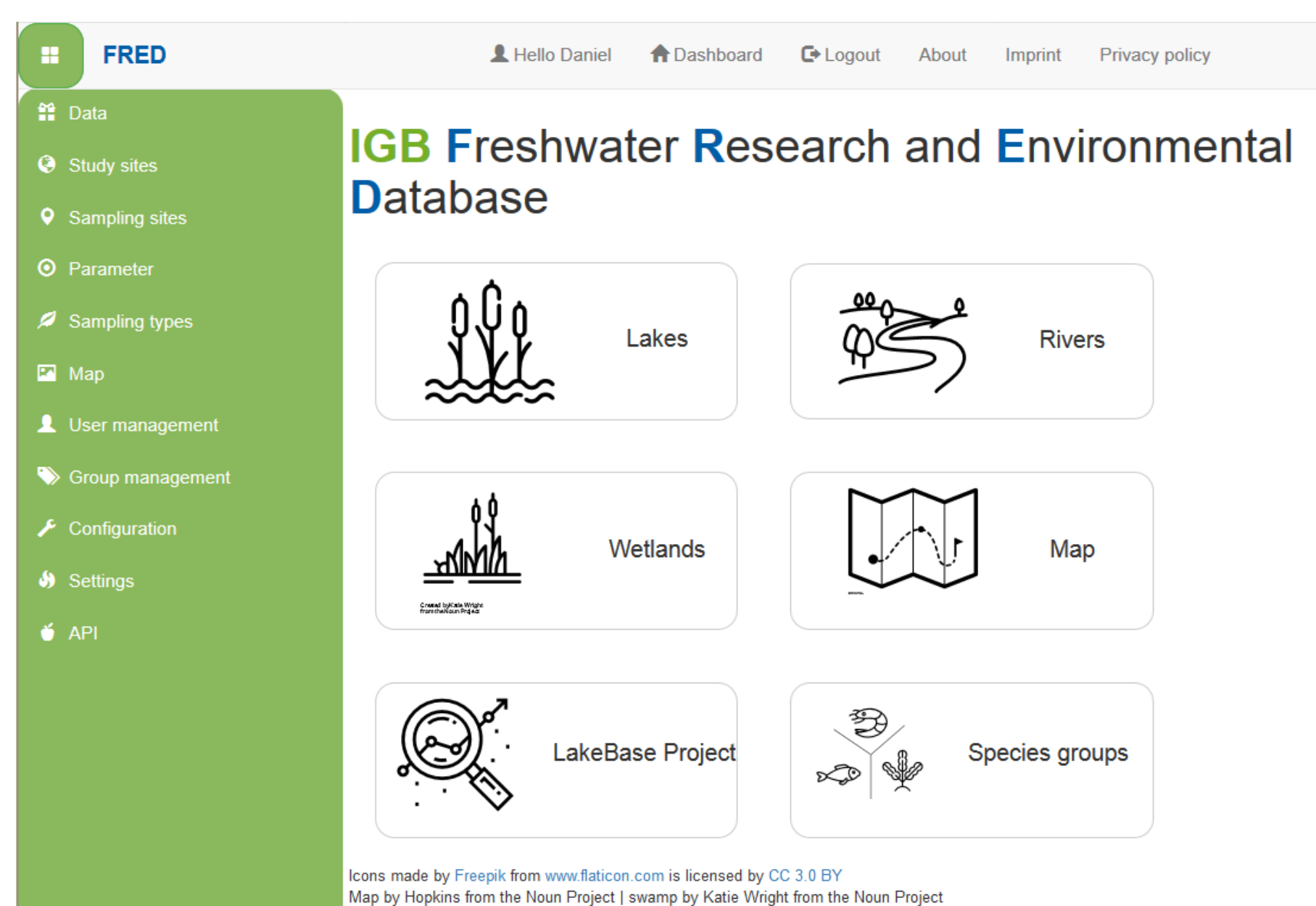


Database Management

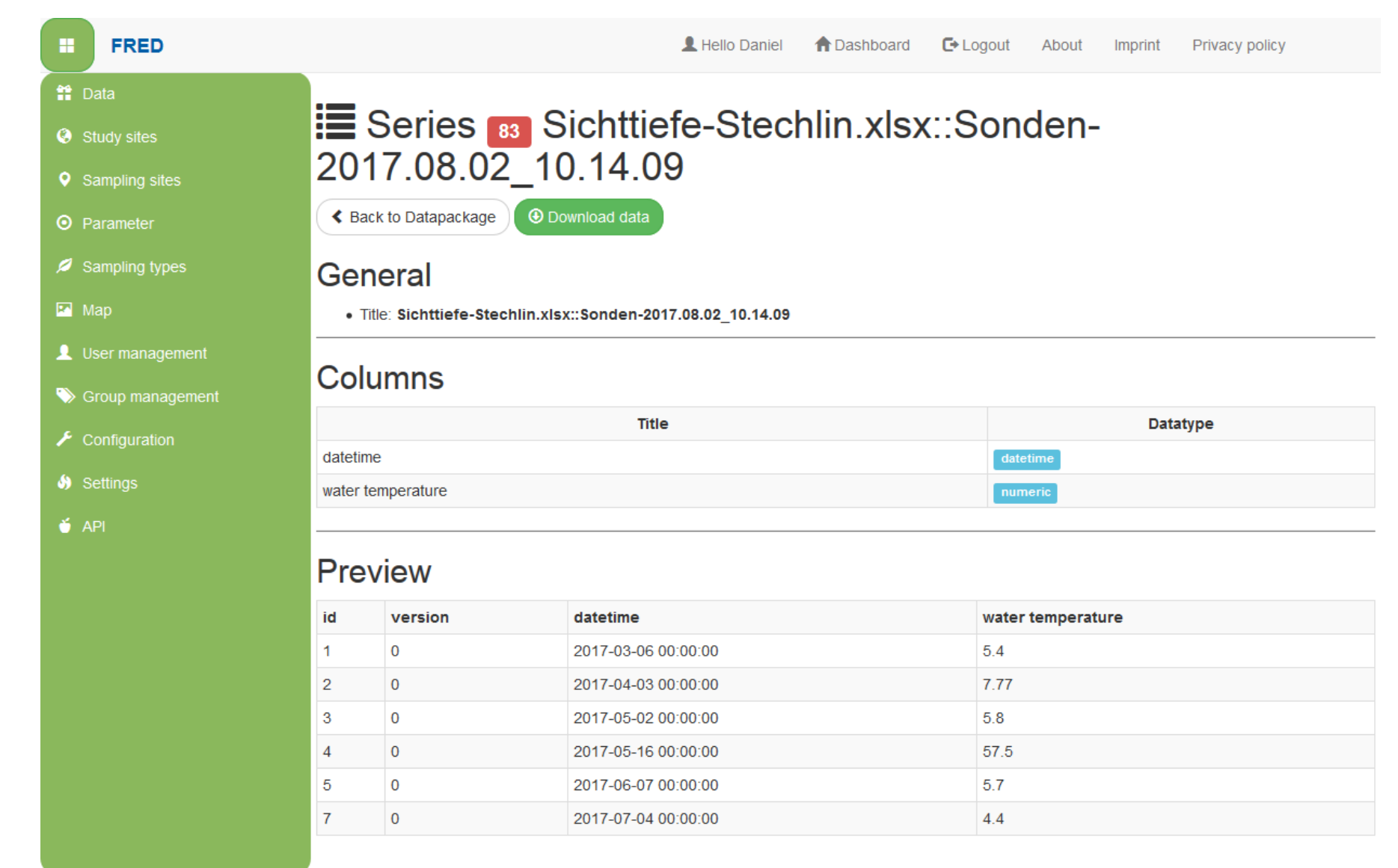
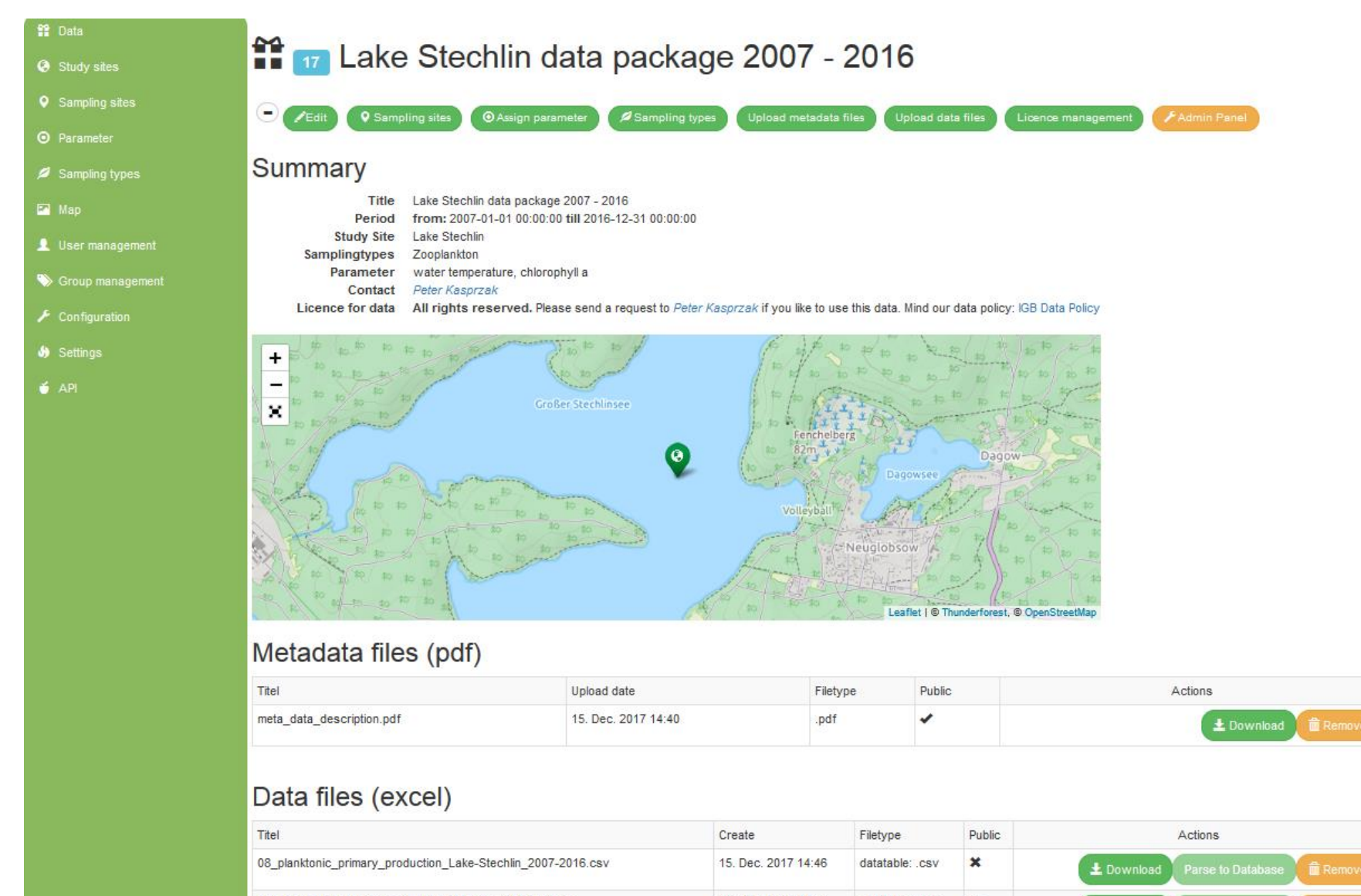
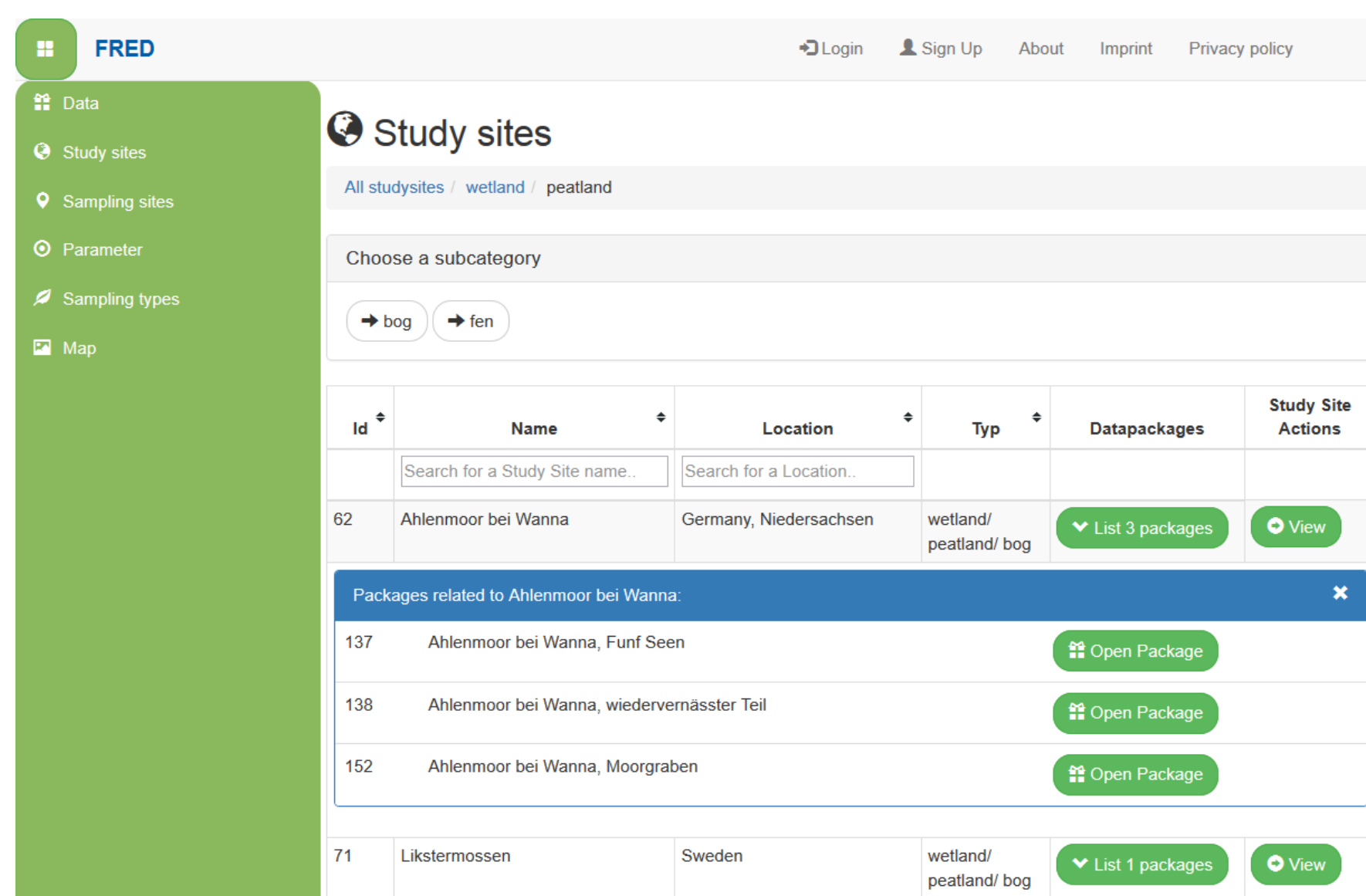
FRED:

Freshwater Research and Environmental Database



Key features

- DOI Service via TIB
- Semantic annotations of data and metadata -> semantic search
- Parsing Excel files into SQL tables
- Interoperability via EML (connect DataOne)

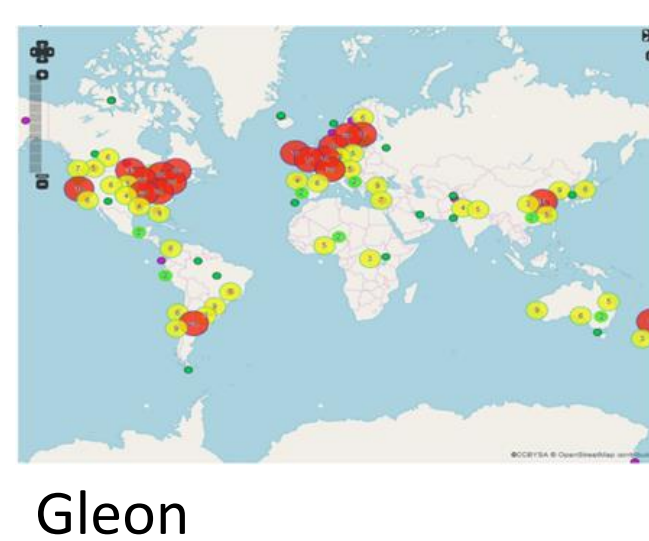


IGB Data Infrastructure

IT Services

- Jira / Confluence
- Active Directory
- Hipchat
- Bitbucket

Global networking



Gleion



IGB Website

- Staff homepages with associated publications
- Real time lake data

Long Term Research

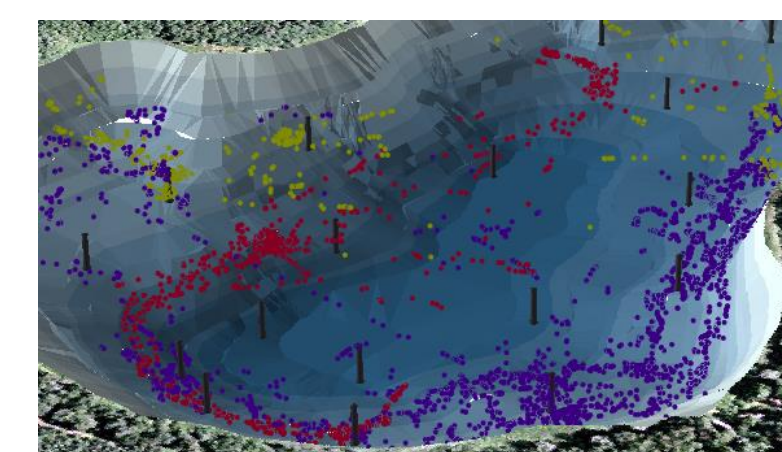
- Müggelsee
- Arendsee
- Stechlinsee
- Spree



Automatic in situ measurements



Large scale experiments



3D Fishtelemetry



Intranet

- Library
- Methods and devices
- Facilities

Kontakt

Rita Adrian
adrian@igb-berlin.de

Simone Frenzel
frenzel@igb-berlin.de

Daniel Langenhaun
langenhaun@igb-berlin.de